

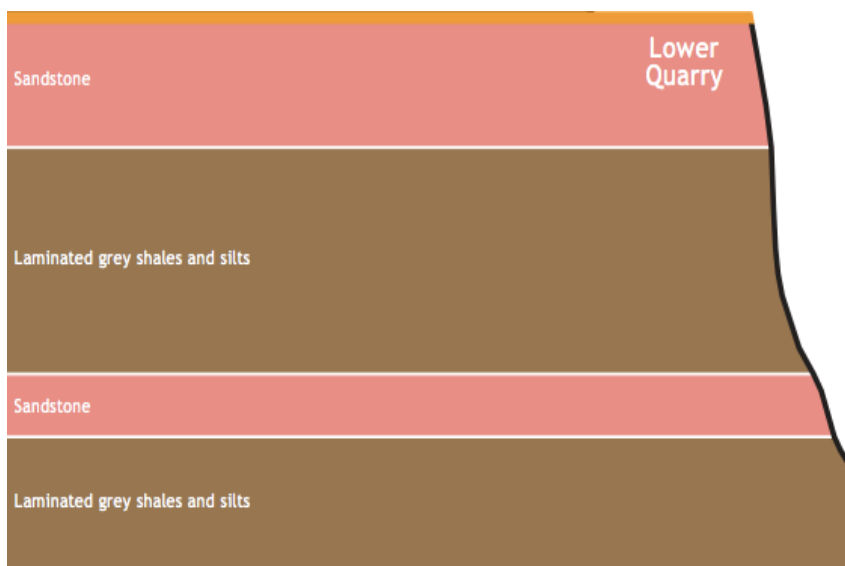
PUPIL NAME:.....

Site 2: The large quarry is known as a SSI. What does this mean? What are you unable to do here?

.....

.....

.....



This picture shows the alternating layers of rock in the lower quarry. Have a close look at the different layers at the site.

What differences can you see between the different layers of rock?

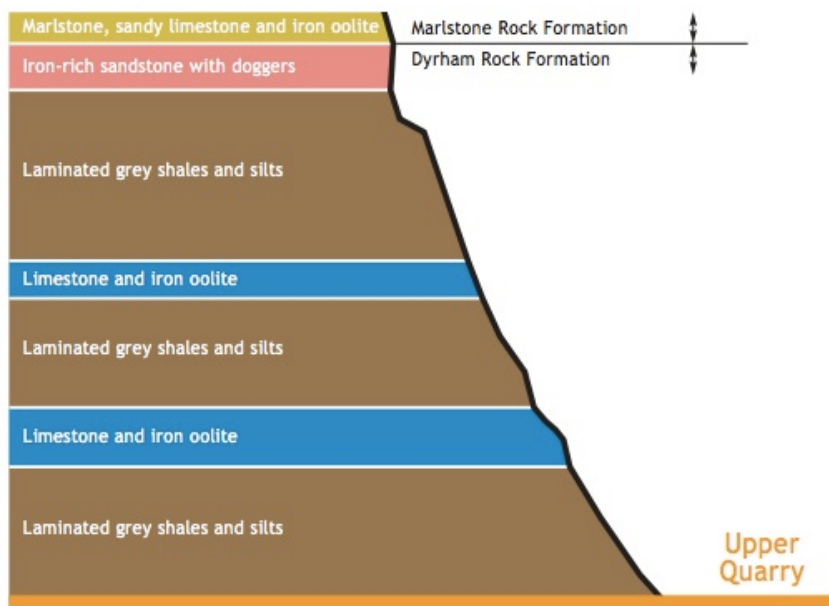
.....

.....

.....

.....

## Robinswood Hill Pupil Worksheet



This is a diagram of the Upper Quarry.

**What is the youngest rock:**  
Grey shales, marlstone or Iron rich sandstone?

.....

**What is the Oldest Formation:**  
Marlstone or Dyrham?

.....



Site 3: Which geomorphological features can you see in the upper quarry face? How do you think these have formed?

.....  
 .....  
 .....  
 .....  
 .....

## Robinswood Hill Pupil Worksheet



Site 5: With the 360 degree panorama of the surrounding areas, why do you think there are so many escarpments? What rock type are they likely to be and why?

.....

.....

.....

.....

.....

## Robinswood Hill Pupil Worksheet

These rocks at sites 1-5 are from the Jurassic period? Approximately, how old are these rocks?

.....

Around the base of the quarry faces, you may see many loose rocks and scree as in the below picture:



What do you think causes the rocks to become loose and to fall down?

.....  
.....  
.....

.....

.....

## Robinswood Hill Pupil Worksheet

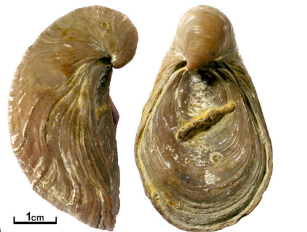
Name the following fossils pictured below



.....



.....



.....



.....



.....

What can these fossils tell us about the rock that they are found within?

.....

.....

.....